

WHY E-LEARNING?

In many cases, organisations first turned to e-learning to decrease the costs associated with training. Traditionally organisations bring employees to a centralized location for classroom training, incurring costs for the venue, trainer, transportation, plus the cost of employees not being available in the workplace. Many see the introduction of web-based training as a simple solution to lower these expenses. However, the value proposition of well-designed e-learning now goes beyond simple reduction in training costs. Good e-learning is a worthwhile investment because it is a highly effective way to transfer information and transform behavior. It is a powerful tool for a organisations wanting to offer a diverse range of learning and development opportunities to staff and minimise the risks associated with non-compliance.

"An organisation's ability to learn, and translate that learning into action rapidly, is the ultimate competitive advantage."

Jack Welch, former CEO of General Electric

HOW DOES THE E-LEARNING PLATFORM INTEGRATED WITH AT-LEARNING WORK?

AT-Learning has a fully integrated e-learning platform which is SCORM 1.2 and 2004 compliant. In brief, it enables you to publish, manage, track and report on e-learning titles/activities.

PUBLISHING You can publish any of your existing SCORM compliant e-content, then manage and track the use of the e-content within your organisation: this includes session, state and sequence tracking of a learner within an e-learning activity.

RESTRICTING ACCESS Whenever one of your staff accesses an e-learning course, this information is stored in the system. The system also allows an administrator to restrict how many attempts / accesses a member of staff can make against a particular course.

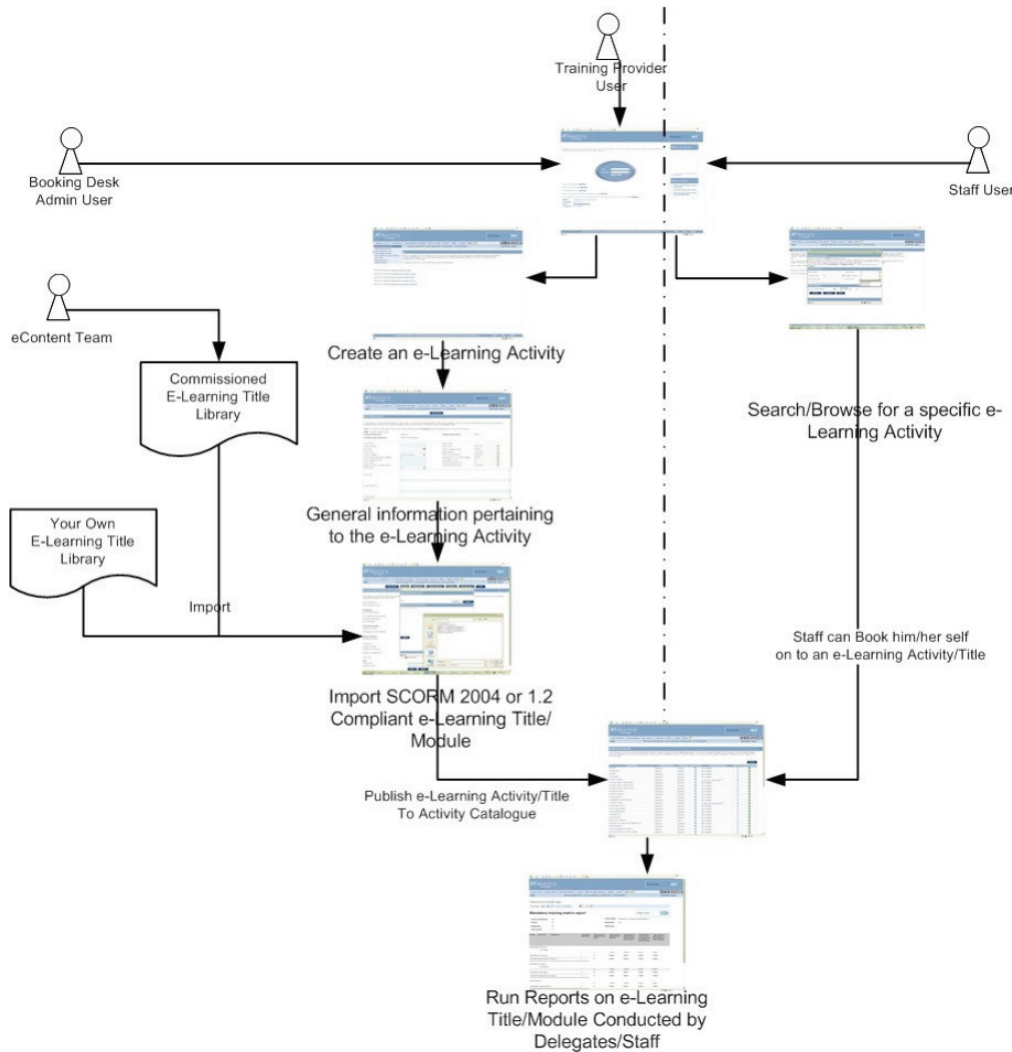
TRACKING AT-Learning is capable of storing the progress of a learner while they are completing a course. In HTML based activities, if a user completes say 3 modules out of possible 5 whenever the user continues they will be able to start from the point where they left in the last session. The course index will be ticked against all the topics the learner has already covered to indicate their progress. AT-Learning can also store other tracking information for instance the time taken by a learner to complete a particular course and how many attempts they have made to complete a course. All these metrics can be used later in the reports.

REPORTING & ASSESSEMENT When an activity is completed their attendance and performance is marked automatically and this is reflected in the standard reports available within AT-Learning. In addition to this if your e-learning activities contain tests and assessments users can enter their feedback against these assessments. These assessments are recorded by the system and the results are reflected in the reports available within AT-Learning.

SELF SERVICE The e-learning platform supports both self service and centralised booking of learners on e-learning titles.

HOW DOES THE E-LEARNING PLATFORM WORK?

The diagram below outlines how e-learning content can be added onto AT-Learning, how then staff can access the e-learning activities and how reports can be run centrally on the completion of e-learning.



CAN WE USE EXISTING E-LEARNING CONTENT THAT WE OWN OR HAVE SUBSCRIBED TO?

You can import your e-learning content into AT-Learning as long as it is SCORM 1.2 or 2004 compliant. Where you have content that is not SCORM compliant our e-content team can for a fee, re-purpose your content to make it SCORM compliant. If you have an existing e-learning repository or Virtual Learning Environment (VLE) then talk to us about how we can integrate AT-Learning with this.

WHAT ENHANCEMENTS TO E-LEARNING REPORTS WILL BE AVAILABLE IN 2009?

From January 2009 new e-learning reports will be live within AT-learning. This will allow administrators to report on the following:

- » Individuals who have added specific e-learning content to their personal account (i.e. booked on to the e-learning activity).
- » Individuals progress within each e-learning module and time spent on the e-learning modules.
- » Individuals progress on sessions within the e-learning modules and how many sessions have been completed by an individual
- » Who has undertaken and passed/failed the tests and with how many attempts.
- » Overall completion of an e-learning module.

Where the e-learning module has tests built into the content, AT-Learning will automatically update performance with no intervention from the administrators required, and will be able to handle tracking through multiple SCOs (multiple learning objects) when they have been combined into a single module using the THESIS Professional SCORM tool.

WHERE CAN I FIND OUT MORE INFORMATION?

Additional information on the e-learning functionality available on AT-Learning can be obtained by speaking to your Account Manager or speaking with the AT-Learning support team directly at support@at-learning.org