

e-learning platform

Why e-learning?

In many cases, organisations first turned to e-learning to decrease the costs associated with training. Traditionally organisations bring employees to a centralised location for classroom training, incurring costs for the venue, trainer, transportation, plus the cost of employees not being available in the workplace. Many see the introduction of web based training as a simple solution to lower these expenses. However, the value proposition of well designed e-learning now goes beyond simple reductions in training costs. Good e-learning is a worthwhile investment because it is a highly effective way to transfer information and transform behaviour. It is a powerful tool for organisations wanting to offer a diverse range of learning and development opportunities to staff and minimise the risks associated with non-compliance.

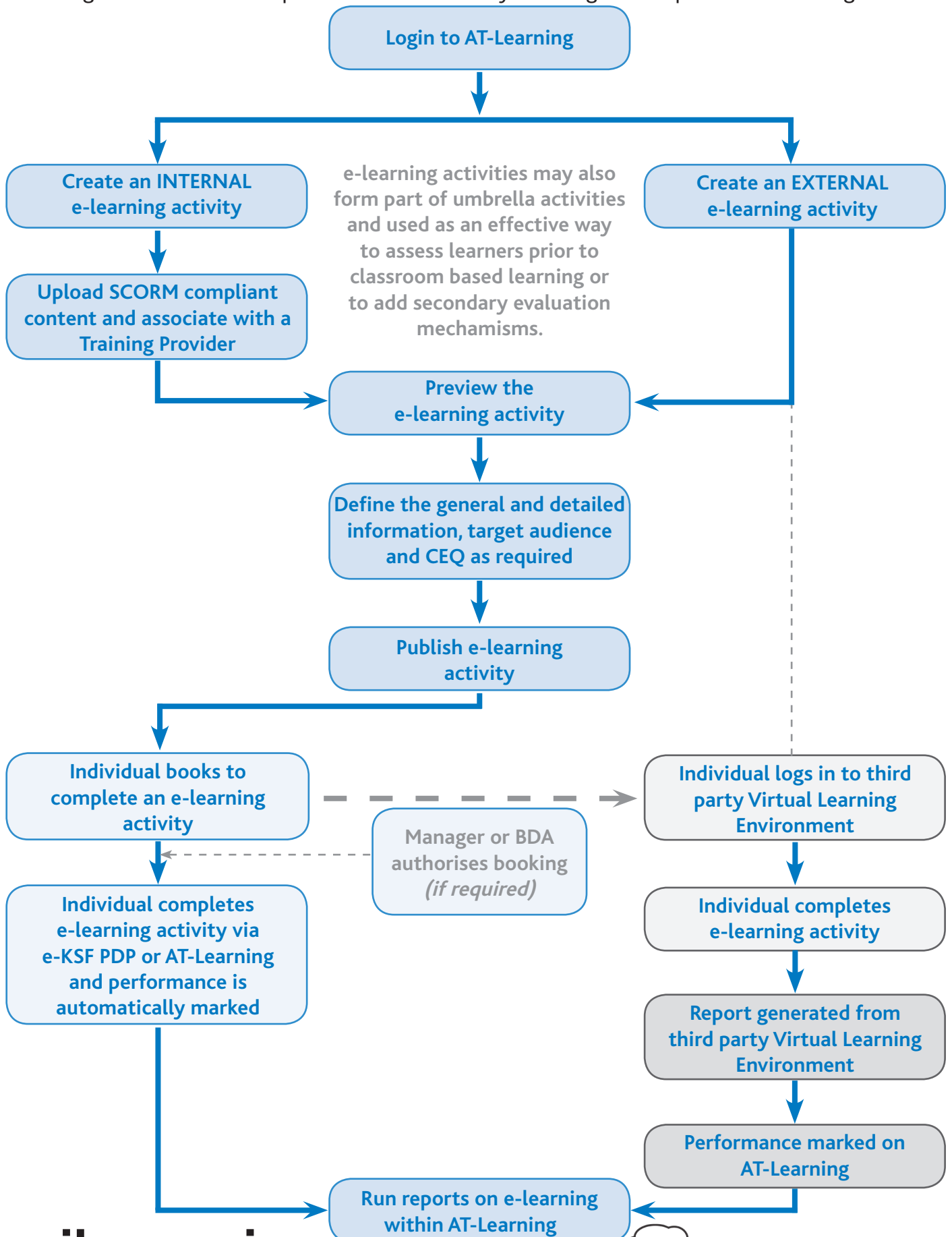
AT-Learning has a fully integrated e-learning platform which is both SCORM 1.2 and 2004 compliant. In brief, it enables you to publish, manage, track and report on e-learning activities.

What functionality is available on AT-Learning's e-learning platform?

<p>Content Upload</p>	<p>Existing SCORM compliant content can be uploaded and used as asynchronous online learning activity (standard non-scheduled e-Learning). It is possible to customise the general information, detailed information, target audience and course evaluation questionnaire for e-learning activities in the same way as information is entered for standard classroom based activities on AT-Learning. It is also possible to schedule e-learning activities as synchronous online learning activity (e.g. classroom-based e-assessments and tests).</p>
<p>Restricting Access</p>	<p>When individuals access an e-learning activity, this information is stored in the system. Administrators can restrict how many times individuals can attempt to complete a particular activity. In addition, administrators can enable and disable 'manager authorisation' for e-learning activities so that access to specific activities can be controlled.</p>
<p>Tracking</p>	<p>AT-Learning is capable of storing a learners' progress within an e-learning activity, for example the time taken to complete a particular course, or the percentage of the activity completed. These metrics can be obtained from system reports.</p>
<p>Reporting and Assessment</p>	<p>When an activity is completed, an individuals' attendance and performance is marked automatically and this is reflected in the standard reports available within AT-Learning or via PDP reports within the e-KSF. If an e-learning activity contains a test or assessment, the outcome of users responses are reflected within the individuals' performance recorded on the system and is accessible via the standard e-learning reports.</p>
<p>Self Service</p>	<p>e-learning activities can be booked by individuals or managers via self service or booked centrally by booking desk administrators. Individuals can launch e-learning activities either by accessing via the e-KSF PDP or directly via AT-Learning.</p>

How does the e-learning platform work?

The diagram below outlines how e-learning content can be added onto AT-Learning, how staff can access e-learning activities and how reports can be run centrally following the completion of e-learning activities:



FAQs

Can we use existing e-learning content that we own or have subscribed to on AT-Learning?

You can upload e-learning content that you have developed in-house or have accessed via third parties onto AT-Learning as long as it is SCORM 1.2 or 2004 compliant. Where you have content that is not SCORM compliant our e-content team can, for a fee, re-purpose your content and make it SCORM compliant. If you have an existing e-learning repository or Virtual Learning Environment (VLE) then talk to us about how we can integrate AT-Learning with this and the benefits of doing this.

What is the difference between an internal and external e-learning activity on AT-Learning?

An **internal e-learning activity** is where e-learning content is accessible to you, (either on a disk or on a local server), that you have permission to upload onto AT-Learning. You can manage, track and report on all internal e-learning activities within the system.

An **external e-learning activity** is a link to third party e-learning content (i.e. content on another VLE), any other asynchronous web link (e.g. www.google.co.uk), and any other synchronous web link (e.g. to a forum or chat server). Another application of external e-Learning is to link to content on a video streaming server, either hosted locally within the intranet, or externally (e.g. www.YouTube.com).

Although AT-Learning can direct users to this content and report on the number of individuals who have booked to complete it or linked this activity within their PDP it is not possible to track individuals progress or report on their attendance / performance within AT-Learning. You can however mark completion in the same way as you mark classroom based attendance and performance if you can generate this data from your third party VLE.

What is the National e-learning Library on AT-Learning?

AT-Learning has a National e-learning library that contains a range of third party content from providers that we believe offer quality e-learning resources applicable to the NHS. Some of these titles are free to use and others involve a usage fee payable to the third party via ikonami. Super Administrators can preview this content, view the terms and conditions associated with it and purchase the number of licenses required.

(e-learning licenses are invoiced within the month they are purchased.)

We intend to extend the functionality within the National Library to allow organisations to share their e-learning content with other organisations either for free or as a means of creating additional revenue / recoup the cost invested in developing the resources.

What reports are available within AT-Learning?

The following reports are currently available as standard reports accessible by Booking Desk Administrators and Super Users:

- » Individuals who have booked to complete e-learning activities on AT-Learning or linked e-learning activities via their e-KSF PDP.
- » Individuals' progress through e-learning activities and time spent on e-learning activities.
- » Individuals' progress on sessions within e-learning activities and how many sessions have been completed by an individual.
- » Individuals overall completion record against an e-learning module.
- » Individuals who have undertaken and passed / failed e-learning assessments and how many attempts have been required to achieve this status.

Where an e-learning activity has an assessment or test defined within the content, AT-Learning will automatically update their performance on the system with no intervention from the administrators required.

Can AT-Learning handle e-learning content with multiple learning objects (SCOs)?

AT-Learning can track individuals' progress through e-learning activities that consist of multiple learning object (SCOs) when they have been combined into a single e-learning activity using tools such as THESIS Professional. In HTML based activities, where there are multiple modules, whenever the user continues to complete an e-learning activity, they will be able to start from the point where they left their last session and the course index will be ticked against all the topics the learner has already covered to indicate their progress.

Can AT-Learning create e-learning activities?

AT-Learning does not currently contain e-learning authoring capability, however we can recommend a number of different authoring tools that create content compliant with AT-Learning depending on your requirements.

What are the advantages of SCORM 2004 over SCORM 1.2?

If you are considering SCORM standards compliance for your e-learning courseware, you may be confused as to which SCORM version to go with. If you are starting a new course, you should definitely choose SCORM 2004 over SCORM 1.1 & 1.2. It is also worth migrating, your e-learning courseware from SCORM 1.1 & 1.2 to SCORM 2004. We will explain why:

No further maintenance for SCORM 1.1 & 1.2 from ADL

The ADL (Advanced Distributed Learning) says they will not carry out further maintenance or testing on the SCORM 1.1 & 1.2 specification. This means that over time, e-learning producers and platforms will cease to be SCORM 1.1/1.2 compliant, so it makes sense to move to a future-proofed system and set of content as soon as you can.

Only SCORM 2004 has support for adaptive sequencing

SCORM 2004 supports adaptive sequencing while SCORM 1.1 & 1.2 does not. This is the reason why many SCORM 1.1 & 1.2 packages consist of just one SCO (Sharable Common Object) with built-in sequencing. SCORM 2004 has a much wider selection of options which allows users to pick up where they left their last e-learning session and also presents content relevant to learner choices within the e-learning. SCORM 2004 will enable content authors to break content down into smaller chunks which will enable more content reuse and better return on investment on e-learning content design.

Different tracking for SCORM and AICC models

SCORM 2004 has clarity on successful completion of courses in the AICC & SCORM data models. In SCORM 2004 these can be reported and tracked separately, in SCORM 1.1 & 1.2 outcomes are not very clearly defined. This feature holds a lot of weight if you are truly interested in effective learning results.

More LMS' support SCORM 2004

There is better understanding of SCORM 2004 among vendors and much more support among mainline LMSs for SCORM 2004 rather than SCORM 1.2.

Tracking and pre-setting the status for multiple learning objectives

Tracking and presetting of status can be done for multiple learning objectives with SCORM 2004. Direct mapping to learning and performance is also possible. The success status can be shared between packages sharing a common LMS. This means that you can customise content delivery based on pre-learning questionnaires or other data that you know about learners.

Interrupted learner sessions have more support for resumption

Interrupted learner sessions can be resumed easily in SCORM 2004 - it has more support for this. The data model for monitoring interactions has also been streamlined and it has more support for simulations and other features.

More sophisticated reporting

SCORM 2004 can give more sophisticated and powerful reporting. SCORM 1.1 & 1.2 reporting can only tell you if the quiz has been passed or failed with a percentage score perhaps, SCORM 2004 may give you the actual questions and the answers given as well as other information about the quiz.

Looking at these advantages, it makes sense to make your e-learning courseware SCORM 2004 compliant. However, if you have already implemented your content as SCORM 1.2, we can help to migrate it to SCORM 2004.

Further Information

Additional information on the e-learning functionality available on AT-Learning can be obtained from your AT-Learning Account Manager or by speaking with the support team directly via support@at-learning.org